

CALIBRE DE SOLDADURA ALINEACIÓN DE CAÑERÍAS

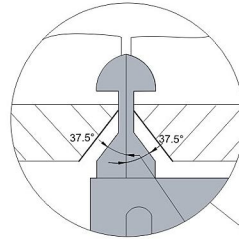
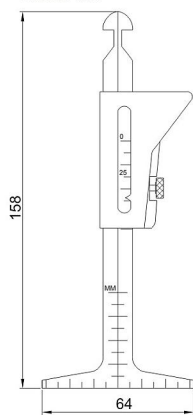


fente

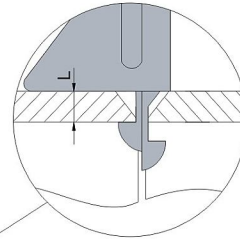


revés

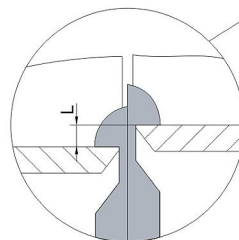
Unidad: mm



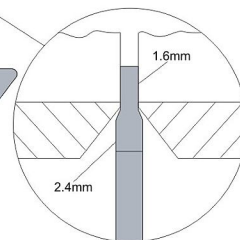
bisel en la preparación final



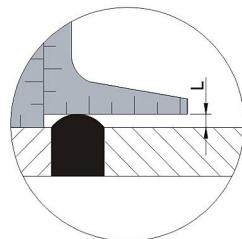
espesor de pared de tubo



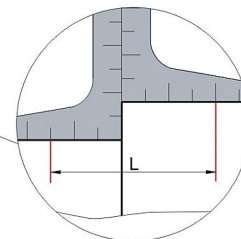
desalineamiento interno



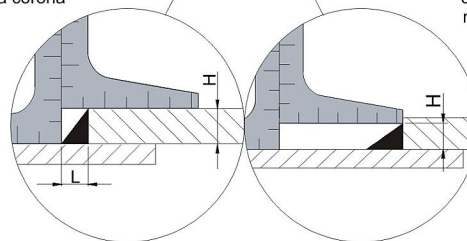
gap



altura de la corona



distancia entre dos marcas



altura y ancho de cordón

Código	Medición	Rango	Graduación	Exactitud
4839-1	bisel en la preparación fina	37.5°	—	±1°
	espesor de pared de tubo	0 - 45mm (0 - 1-3/4")	1mm (1/16")	±0.5mm
	desalineamiento interno	0 - 35mm (0 - 1-3/8")	1mm (1/32")	±0.5mm
	gap	1.6mm, 2.4mm	—	±0.1mm
	altura de la corona	0 - 35mm (0 - 1-3/8")	1mm (1/32")	±0.5mm
	distancia entre dos marcas	0 - 60mm (0 - 2-3/8")	1mm (1/16")	±0.5mm
	ancho del cordón	0 - 30mm (0 - 1-1/4")	1mm (1/16")	±0.5mm
	altura del cordón	0 - 35mm (0 - 1-3/8")	1mm (1/32")	±0.5mm

■ Acero inoxidable

